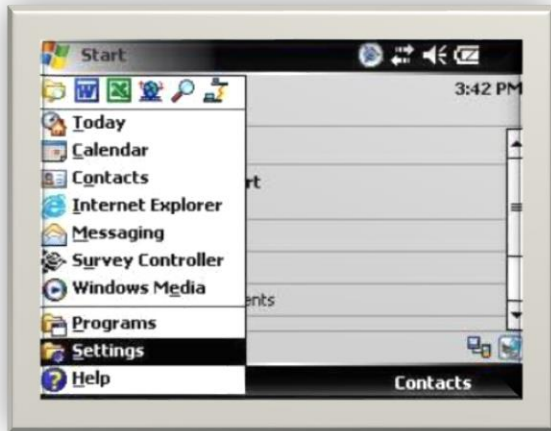


Trimble GeoXH and Mobile phone connection

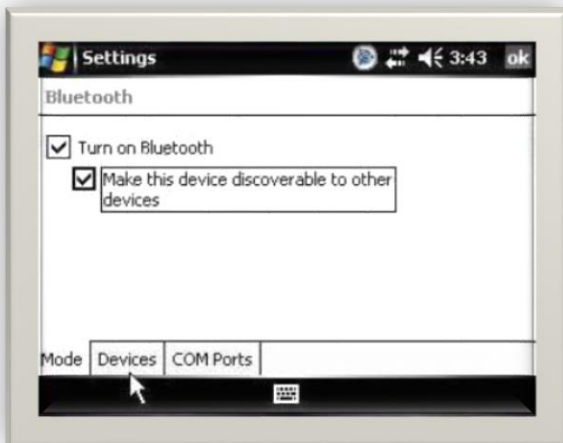


In the main Windows screen, pick on the Start menu and then pick settings.



In the "Wireless Manager" disable wireless internet and enable Bluetooth.

In the settings window, pick on the connections tab on the bottom of the screen. Then double click on Bluetooth to pair your data collector with your VRS cell phone.



You will want to check the box next to "Turn on Bluetooth" and also check the box next to "Make this device discoverable to other devices". Sometimes you have to scan with your cell phone to find the data collector if it won't find your cell phone.



Pick on the devices tab on the bottom of the screen. To pair your cell phone, pick on "New Partnership" and your data collector will search for the phone. Once it finds it, your phone may ask for a pass key. Type in 1 2 3 4 and also type it in again when your data collector asks for the pass key. Once that is done, your data collector and your cell phone should be successfully paired. You will now be able to see it on your devices list.

(In the phone set the data controller GeoXH as trusted for such a connection if it is possible)



Once your device is found, select it on the list and pick next. At this screen, you will want to make sure that you have the Dialup Networking checked. Then pick "Save".

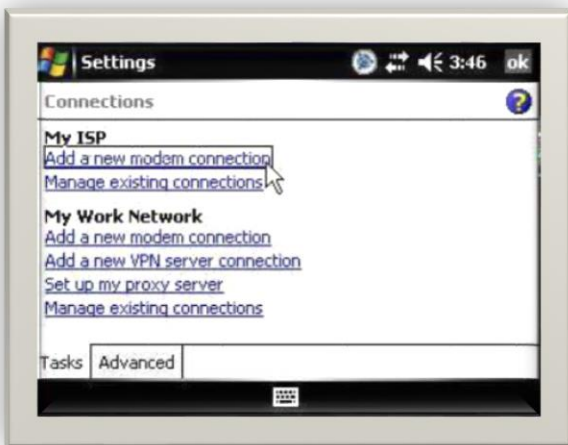
The phone itself has to have DUN (dialup networking possibility)



Once you are back at this screen, pick "OK" in the upper right corner.



When you are back in this screen, pick on the "Connections" icon to set up your ISP connection.



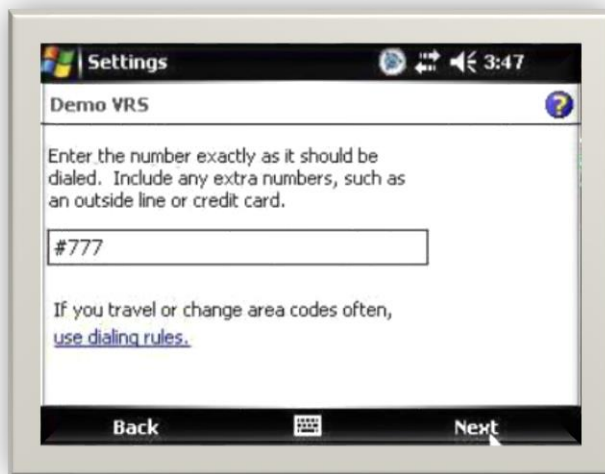
Under the My ISP heading, pick on "Add new modem connection"



In this screen, first type in a name for your new connection. Then, under the select a modem heading, pick "Bluetooth" in the pull down. Then pick "Next" on the bottom of the screen.



Once you are in this screen, select your phone that your partnered up with the data collector and then pick "Next" on the bottom of the screen.

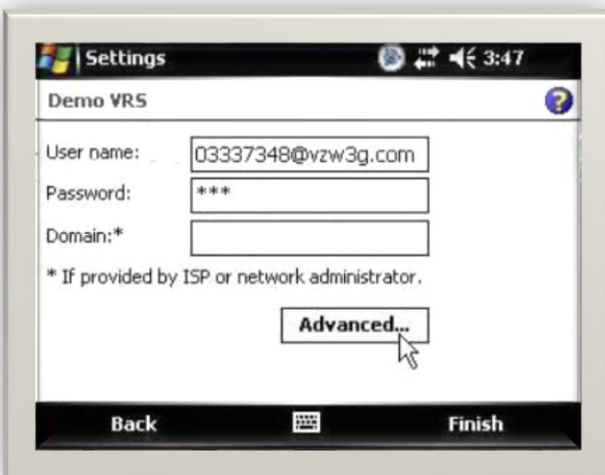


In this screen, type in the dial string that your cell phone provider requires to connect to the web. Then pick "Next" on the bottom of the screen.

For siminn *99***1#

For Vodafone *99#

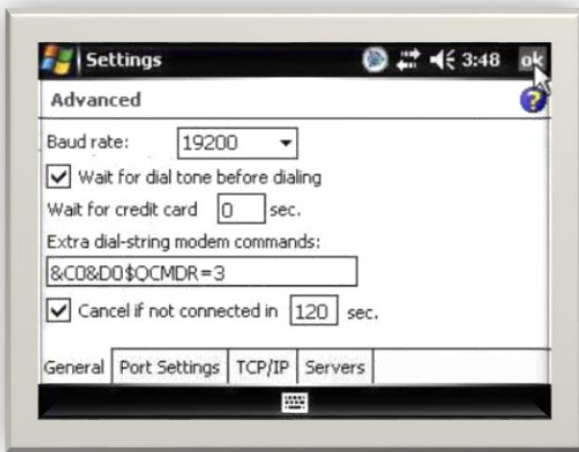
For Alterna *99***1#



Enter in your username and password that your cell phone provider requires to connect to the web.

For siminn:	For Vodafone:	Alterna:
Username: siminn	none	none
Password: siminn	none	none

Pick on the "Advanced" button.



If your provider requires a special modem command, in the advanced settings box, type in the special modem command that is required by your cell phone provider.

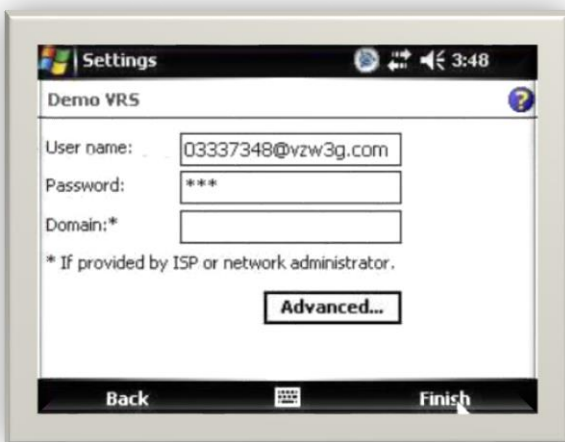
For siminn: `+cgdcont=1,"ip","internet.is"`

For Vodafone:

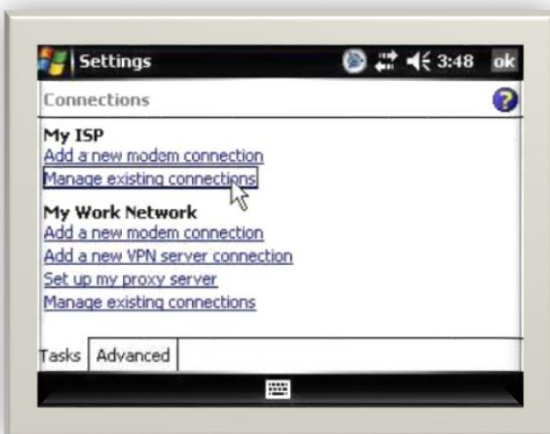
`+cgdcont=1,"ip","gprs.is"`

For Alterna:

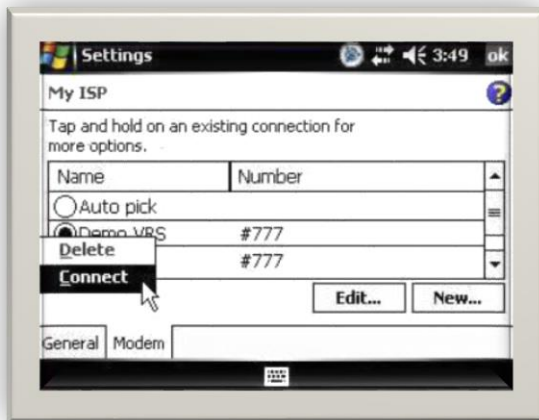
`+cgdcont=1,"ip","gprs.imc.is"`



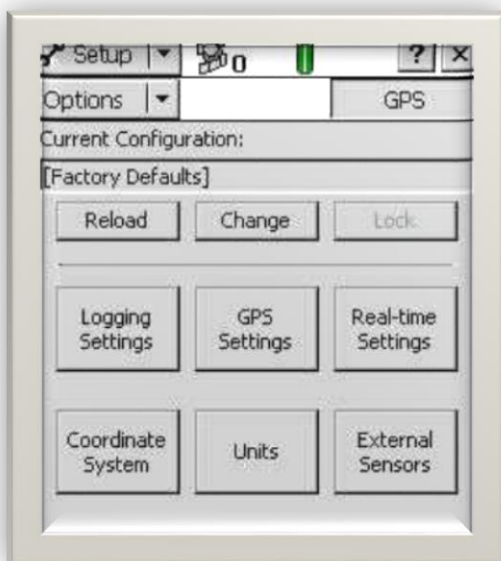
When you are back in this screen, pick "Finish" on the bottom of the screen. (The domain box is to be left blank).



After you pick finish, you will be brought back to this screen. Again pick "Manage existing connections".



In this screen, you should see the connection you just made, along with the dial string. Pick and hold down on the connection and then pick “connect” on the pull down. This is a test to see if your GeoXH will successfully connect to the web via your phone. It should say that it is dialing, then the box will disappear. To check if it has connected, pick on the two arrows on the top of the screen next to the speaker icon. You will get a box that has a counter on it and a button that says disconnect. That means you are connected, so you can go ahead and pick “Disconnect”.



Now, when you are connected to the internet run TerraSync software and go to setup.

In GPS settings:

NMEA Output: ON.

In real-time settings :

Choice 1: External source:

Type: VRS

Connection method: Internet

Address: 213.167.147.216

Port: 2101

Source: select one from the table.

Connection control: auto

Real-time protocol: RTCM

Choice 2: Wait for real-time

Real-time age limit: 15-20sec.

Mountpoint	Identifier
ISAF02	ISAF RTCM2.3
HEID02	HEID RTCM2.3
HEID03	HEID RTCM3.0
ISAF03	ISAF RTCM3.0
REYK02	REYK RTCM2.3
HOFN02	HOFN RTCM2.3
REYK03	REYK RTCM 3.0
HOFN03	HOFN RTCM 3.0
MAC31	MAC RTCM 3.1
FKP23	RTCM correction SAPOS standard
AKUR02	AKUR RTCM 2.3
AKUR03	AKUR RTCM 3.0

Source Table:

Select the stream from the table.

Go back to TerraSync software’s setup by pushing “OK” button. There in setup window of TerraSync, push the “GPS” button to receive the corrections. If you are using external antenna, the button “External source” will appear beside the “GPS” button – push that button.

If you want to start measurements go to Setup/Data and push the button “Create”.